

# \$970,000 - 153 South Shore View, Chestermere

MLS® #A2208520

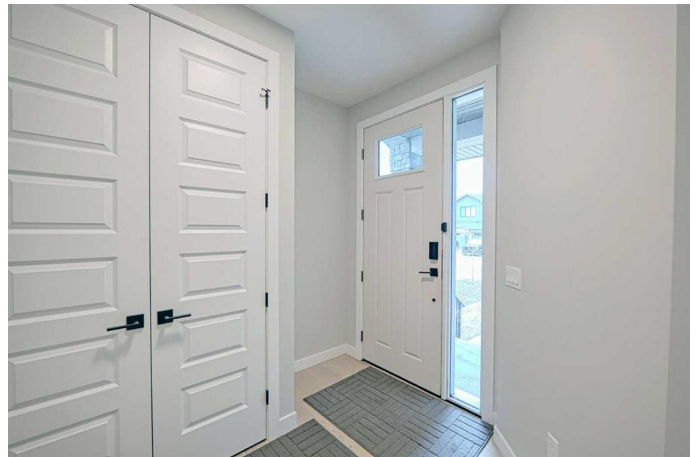
**\$970,000**

4 Bedroom, 3.00 Bathroom, 2,605 sqft  
Residential on 0.12 Acres

South Shores, Chestermere, Alberta

Welcome to this stunning executive home in the highly sought-after new community of Chestermere! Ideally located just minutes from local amenities including grocery stores, restaurants, banks, and pharmacies— with East Hills Shopping Centre only 10 minutes away and a short 15-minute drive to Calgary. Built by Prominent Homes, this upscale property features 4 spacious bedrooms plus a versatile bonus room upstairs— perfect as a den, playroom, or additional family room. With 2.5 bathrooms and a triple attached garage, this home offers both luxury and practicality. Step inside to a thoughtfully designed open-concept main floor with 9â€™™ ceilings and abundant natural light pouring in through large windows and a sliding patio door. Sliding patio door from the dining area to a large deck facing south east. The gourmet kitchen showcases double islands, one of which has an eating bar, quartz countertops, custom cabinetry, a built-in oven, and a gas cooktop— plus a convenient spice kitchen/pantry. The cozy living room open to below has a gas fireplace on the feature wall, while the main floor office is ideally located near the front entrance. A spacious mudroom and half bathroom complete the main level. The mud room is located off the triple car garage and has an access door to the spice kitchen/pantry and to the main kitchen.

Main level features vinyl plank , tile and the upstairs has carpet in the bedrooms.



Upstairs, enjoy a luxurious master bedroom with a 5-piece ensuite and walk-in closet, plus three additional bedrooms, a second 5-piece bathroom, a bonus room, and a well-placed laundry room.

This home is the perfect blend of elegance, function, and locationâ€”donâ€™t miss your chance to view it!

Built in 2023

### Essential Information

MLS® #	A2208520
Price	\$970,000
Bedrooms	4
Bathrooms	3.00
Full Baths	2
Half Baths	1
Square Footage	2,605
Acres	0.12
Year Built	2023
Type	Residential
Sub-Type	Detached
Style	2 Storey
Status	Active

### Community Information

Address	153 South Shore View
Subdivision	South Shores
City	Chestermere
County	Chestermere
Province	Alberta
Postal Code	T1X 2R9

### Amenities

Parking Spaces	6
Parking	Garage Door Opener, Garage Faces Front, Insulated, Triple Garage Attached
# of Garages	3

## Interior

Interior Features	Built-in Features, Double Vanity, High Ceilings, Kitchen Island, Open Floorplan, Pantry, Separate Entrance, Soaking Tub, Vaulted Ceiling(s), Walk-In Closet(s)
Appliances	Built-In Oven, Dishwasher, Dryer, Electric Cooktop, Garage Control(s), Gas Range, Microwave, Range Hood, Refrigerator, Washer
Heating	Forced Air
Cooling	None
Fireplace	Yes
# of Fireplaces	1
Fireplaces	Gas, Living Room
Has Basement	Yes
Basement	Full, Unfinished

## Exterior

Exterior Features	None
Lot Description	Rectangular Lot
Roof	Asphalt Shingle
Construction	Stone, Wood Frame
Foundation	Poured Concrete

## Additional Information

Date Listed	April 9th, 2025
Days on Market	13
Zoning	RC-1

## Listing Details

Listing Office	Diamond Realty & Associates LTD.
----------------	----------------------------------

Data is supplied by Pillar 9â„¢ MLSÂ® System. Pillar 9â„¢ is the owner of the copyright in its MLSÂ® System. Data is deemed reliable but is not guaranteed accurate by Pillar 9â„¢. The trademarks MLSÂ®, Multiple Listing ServiceÂ® and the associated logos are owned by The Canadian Real Estate Association (CREA) and identify the quality of services provided by real estate professionals who are members of CREA. Used under license.